

POISON

**KEEP OUT OF REACH OF CHILDREN
FOR ANIMAL TREATMENT ONLY
READ SAFETY DIRECTIONS BEFORE OPENING OR USING**



Doramectin Pour On Endectocide FOR CATTLE

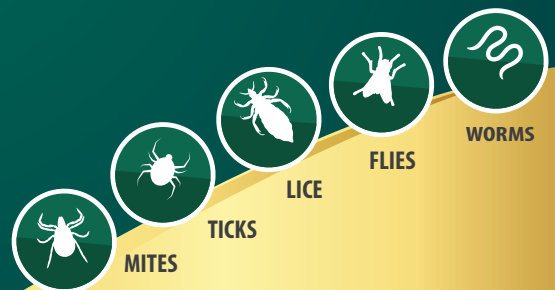
ACTIVE CONSTITUENT: 5 mg/mL DORAMECTIN

For the treatment and control of doramectin sensitive internal and external parasites of cattle.

For the treatment and persistent control of gastrointestinal roundworms, lungworms and buffalo fly in cattle.

For the control of eye worms, sucking and biting lice, mange mites and cattle ticks.

DO NOT APPLY TO AREAS OF THE BACKLINE COVERED WITH MUD OR MANURE. THIS PRODUCT IS FOR APPLICATION TO SKIN SURFACE ONLY, DO NOT GIVE ORALLY OR BY INJECTION.



Net 20L



AGRO-ALLIANCE
(AUSTRALIA) PTY LTD
A.B.N. 11 130 864 603



TalentCare Doramectin

Pour On Endectocide for Cattle

Animals must NOT be repeat treated within 56 days (8 weeks) of a previous treatment.

Precautions:

For best results, do not treat cattle when their hide or hair is wet. Do not apply to areas of skin which are contaminated with mud or manure. Worm parasites may develop resistance to any anthelmintic. If this is suspected contact your local veterinary practitioner or advise the manufacturer.

Dosage and Administration:

Restraints: FOR EXTERNAL USE ONLY.

Apply topically along the mid-line of the back in a narrow strip between the withers and tailhead. Use the dose rate, according to the weight of the animal in the weight/dose table. The dose rate should be based on the heaviest member in the weight range. Cattle should be weighed with either scales or a weighband.

DOSE RATE: 1mL per 10 kg bodyweight.

To obtain optimal benefit from the persistent-action, it is recommended that cattle which are set-stocked should be treated twice at eight week intervals. By using in this way, Talentcare Doramectin Pour-On Endectocide will reduce the build-up of infective larvae on pasture and protect such as animals from parasitic gastro-enteritis and parasitic bronchitis by reducing pasture larval challenge.

Directions for Use:

For the treatment and control of doramectin sensitive internal and external parasites of cattle.

For the treatment and persistent control of gastrointestinal roundworms, lungworms and buffalo fly in cattle. Control of eye worms, sucking and biting lice, mange mites and cattle ticks. Highly effective in the treatment and control of the following species:

Gastrointestinal roundworms (adults and forth stage larvae)

Ostertagia ostertagi - Small brown stomach worm

Haemonchus placei - Barber's pole worm

Trichostrongylus axei - Stomach hair worm

T. colubriformis - Black scour worm

Cooperia spp. - Small intestinal worm Cooperia oncophora

Bunostomum phlebotomum - Hook worm

Oesophagostomum radiatum - Nodule worm

Nematodirus spathiger - Thin necked intestinal worm

Thelazia spp. - Eye worm

Thichuris spp. - Whipworm

Adult and Immature Lungworm Dictyocaulus viviparus

Sucking Lice Linognathus vituli Haematopinus eurytenuis Solenopotes capillatus

Biting Lice: Bovicola bovis

Buffalo Fly: Haematobia irritans exigua

Cattle Tick: Boophilus microplus

Mange Mites: Chorioptes bovis Sarcoptes scabiei var. bovis

When applied as directed this product can persistently protect against various gastrointestinal roundworms for 21 to 35 days; against lungworms for up to 28 days and against buffalo flies for up to 14 days.

Extensive studies have also demonstrated the following levels of persistent protection against reinfection from important worm species:

Ostertagia ostertagi -	Up to 35 days
Haemonchus placei -	Up to 35 days
Trichostrongylus axei -	Up to 35 days
Cooperia spp. -	Up to 35 days
Cooperia oncophora -	Up to 21 days
Dictyocaulus viviparus -	Up to 28 days
Oesophagostomum radiatum -	Up to 21 days
Bunostomum phlebotomum -	Up to 21 days

General Directions:

NOT TO BE USED FOR ANY PURPOSE, OR IN ANY MANNER, CONTRARY TO THIS LABEL UNLESS AUTHORISED UNDER APPROPRIATE LEGISLATION.

Withholding Periods:

MEAT - DO NOT USE less than 42 days before slaughter for human consumption. MILK - NIL

Trade Advice: Export Slaughter Interval: Do not slaughter cattle for export within 42 days of treatment.

Safety Directions: Poisonous if swallowed. Will irritate the eyes and skin. Avoid contact with skin and eyes. When using the product wear face shield or goggles. If product in eyes, wash them out immediately with water. Wash hands after use. After each day's use, wash face shield or goggles. Use only in well ventilated surroundings.

Flammable - Keep away from heat, sparks, open flame and other sources of ignition.

First Aid Instructions: If poisoning occurs, contact a doctor or Poisons Information Centre. Phone 131 126. If skin contact occurs, remove contaminated clothing and wash skin thoroughly.

Additional information is listed in the Material Safety Data Sheet. In transport emergency contact 1800 024 973.

ENVIRONMENTAL PROTECTION: Doramectin is extremely toxic to aquatic species. Do not contaminate dams, rivers, streams or other waterways with the chemical or used container. When used according to label instructions, the product is not likely to have an unintended effect that is harmful to the environment or have an overall adverse impact on dung beetle populations. Increased mortality and impaired development of larvae may be expected, but for a limited period after treatment.

Disposal: For 250 mL and 1 L pack sizes:

Dispose of container by wrapping with paper and putting in garbage.

For 2.5 L, 5 L, 10 L and 20 L pack sizes:

Triple-rinse container. Do not dispose of undiluted chemicals on-site. If recycling, replace cap and return clean container to recycler or designated collection point. If not recycling, break, crush, or puncture container and deliver to an approved waste management facility. If an approved waste management facility is not available, bury the broken, crushed or punctured containers 500 mm below the surface in a disposal pit specifically marked and set up for this purpose clear of waterways, vegetation and tree roots, in compliance with relevant local, state or territory government regulations. Do not burn empty containers or product.

Storage: Store at temperatures below 30°C (Room Temperature). Protect from direct sunlight.

Refer to the instructions of the dosing cup/applicator on the inner carton for the method of administration.

(CHART-1)

DOSE RATE: 1 mL per 10 kg bodyweight	
Liveweight (kg)	Dose Volume (mL)
40 - 50	5
51 - 75	7.5
76 - 100	10
101 - 150	15
151 - 200	20
201 - 250	25
251 - 300	30
301 - 350	35
351 - 400	40
401 - 450	45
451 - 500	50
501 - 550	55
551 - 600	60
601 - 650	65

*Cattle whose weight exceeds 650 kg should be dosed at 1 mL per 10 kg bodyweight.
Treatment of very young animals less than 40 kg bodyweight is generally not warranted.

Agro-Alliance Australia Pty Ltd

Address: 2 Mavron Street.,
Ashwood VIC 3147, Australia.
info@agroalliance.com.au
Tel: 1300 82 89 88

APVMA NO. 91103/130955

Batch No.

Expiry Date:

